

RSB 3x3



RSB 4x3



RSB 4x4



**RC Fittings**



RC3x5055

RC4x5055



1pc Clamp



Kelly Spinner Clamp



2pc Clamp



**Ferrules**



**Eliminator  
Choke & Kill**



**Diverter  
Hose**

**Diverter Fitting**



**6" Threaded NPT  
with Ferrule**



**FIG1502**

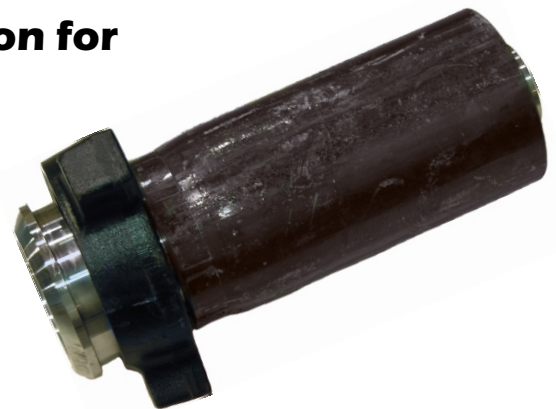


**FIG607**



**FIG602**

**4" Integral with 602 Union for  
3" Hose**



- **Seamless Tubular Design With No Weldment**
- **Re-buildable**
- **One MTR To Control The Piece**
- **Available In Various Configurations**

**Extended Crimp Fitting  
Integral 2" NPT**

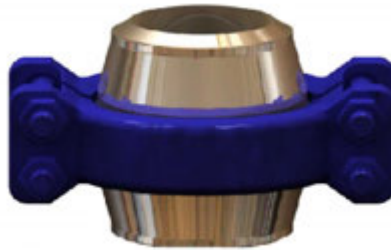


- **Heavy Duty Design**
- **Extended Neck for Fitting Attachment**
- **Built Using 4140 Steel**
- **3000psi & 5000psi**

**API Type 6B Ring  
Joint Flanges**



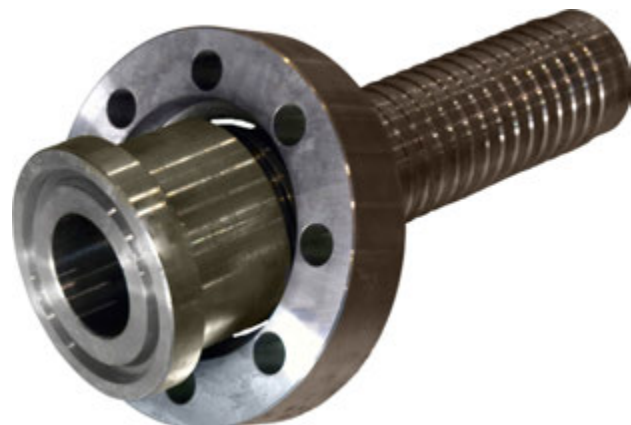
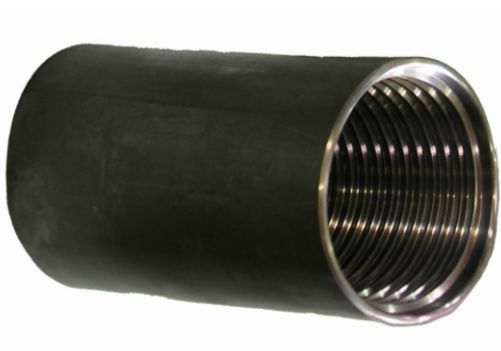
**Grayloc Hub**



**McKinney Hub**



**Floating Flange**





**FIG100**



Size	Part #
2"	FIG10032
3"	FIG10048
4"	FIG10064
6"	FIG10096

**FIG200**



Size	Part #
1"	FIG20016
1-1/2"	FIG20024
2"	FIG20032
3"	FIG20048
4"	FIG20064

**FIG400**



Size	Part #
2"	FIG40032
3"	FIG40048
4"	FIG40064

**FIG602**



Size	Part #
1"	FIG60216
1-1/2"	FIG60224
2"	FIG40032
3"	FIG40048
4"	FIG40064

**FIG607**



Size	Part #
2"	FIG60732

**FIG1002**



Size	Part #
3"	FIG100248
4"	FIG100264

**FIG1502**



Size	Part #
2"	FIG150232
3"	FIG150248